

Fan Coil Unit (4 Way Cassette Type)



Cassette Fan Coil Unit(4-way)

Air Flow

- *4-way air flowing, is easy to be installed in the side of ceiling
- *The unit can auto swing with a wide air flowing range

Low Noise

Large diameter centrifugal fan, super-silent operation.



Efficient and Energy Saving

To maximize heat transfer and exchange efficiency, the unit features heat exchange coils made of quality copper tubes, efficient hyperbolic aluminum shutter fins, precise mechanic tube expansion



Ingenious Design

- *With high head lift drained water pump
- *With inside float switch to prevent leaking
- *Unit with inbuilt water valve is optional
- *Fresh air can be inputed from outside
- *Water tube connection direction can be selected
- *4 pipe system and electrical heater is optional



Easy for Installation and Operation

- *With a very thickness body can be installed in a limit ceiling
- *Easy to be installed, no need air duct, save installation cost
- *Humanized remote controller and wire controller (optional)



Four Way Cassette Fan Coil Unit

Nomenclature

	<u>ES</u>	<u>T</u>	<u>200</u>	<u>C</u>	<u>2</u>	<u>K1</u>	<u>S</u>	<u>0</u>	<u>A</u>	<u>O</u>
	1	2	3	4	5	6	7	8	9	10
1	ES									
2	T	Terminal series								
3	200	Rated Air Flow:CFM								
4	C	Cassette a								
5	2	Pipe System								
		2:2 pipe system (one water inlet,one water outlet)								
		4:4 pipe system (two water inlet,two water outlet)								
6	K1	Air Outlet								
		K4:Four Way K1:One Way K2:Two Way K:Multi Way								
7	S	Drainage Way								
		S: Natural Drainage, No Control Q: Forced Drainage, Electronic Control								
		H: Natural Drainage, Electronic Control V: Forced Drainage, Electronic Control, Built-in Water Valve								
8	0	Built-in Electrical Heating Power								
		0:None 1::Electrical Heating Power 1.0KW (so on and so forth)								
9	A	Power Supply								
		A:220V-50HZ K:208~230V-60HZ								
		N:115V-60HZ W:265~277V-60HZ								
10	O	Sales Region O: Other Regions								

Product Photos



Cassette Fan Coil Unit (4-way 2 pipe system)

Model EST~		200C2	300C2	400C2	500C2	600C2	800C2	1000C2	1200C2	1400C2		
Power supply		220V/1PH/50HZ										
Air flow (m3/h)	H	340	510	680	850	1020	1360	1700	2040	2380		
	M	280	380	515	660	765	1040	1280	1550	1800		
	L	180	260	340	430	530	710	860	1050	1280		
Static pressure		Pa	0	0	0	0	0	0	0	0		
Cooling capacity	TH	H	W	1800	2700	3600	4500	5400	7200	9000	10800	12600
			BTU/h	6142	9212	12283	15354	18425	24566	30708	36850	42991
	SH	H	W	1311	1971	2700	3184	4196	5362	6707	8072	9070
			BTU/h	4473	6725	9212	10864	14317	18295	22884	27542	30947
	TH	M	W	1500	2460	3000	3715	4423	6435	7848	9296	10500
			BTU/h	5118	8394	10236	12676	15091	21956	26777	31718	35826
	SH	M	W	994	1555	1995	2426	3041	4236	5393	6603	7190
			BTU/h	3392	5306	6807	8278	10376	14453	18401	22529	24532
	TH	L	W	1391	2057	2479	2921	3793	5604	7223	8534	8900
			BTU/h	4746	7018	8458	9966	12945	19121	24645	29118	30367
	SH	L	W	823	1200	1530	1826	2373	3284	4416	5248	5500
			BTU/h	2808	4094	5220	6230	8097	11205	15067	17906	18766
Heating capacity	H	W	2700	4050	5400	6750	8100	10800	13500	16200	18900	
		BTU/h	9215	13823	18430	23038	27645	36860	46076	55291	64506	
	M	W	1949	2770	3938	4902	5694	7924	10473	12997	13900	
		BTU/h	6652	9454	13440	16731	19434	27045	35744	44359	47441	
	L	W	1297	1774	2779	3505	3876	5421	6992	8645	9700	
		BTU/h	4427	6055	9485	11963	13229	18502	23864	29505	33106	
Noise	H	dB(A)	37	39	41	43	45	46	48	50	51	
Power input	H	W	37	52	62	76	96	134	152	189	228	
Water flow	H	m3/h	0.31	0.46	0.62	0.77	0.93	1.23	1.85	2.16		
Water resistance		kPa	11.8	11.8	22.4	27	29.6	29.6	35.4	35.4	40	
Pipe	Inlet water pipe		ZG3/4"	ZG3/4"	ZG3/4"	ZG3/4"	ZG3/4"	ZG3/4"	ZG3/4"	ZG3/4"	ZG3/4"	
	Outlet water pipe		ZG3/4"	ZG3/4"	ZG3/4"	ZG3/4"	ZG3/4"	ZG3/4"	ZG3/4"	ZG3/4"	ZG3/4"	
Coil		type	Hydrophilic aluminum fin arounds high efficient copper pipe									
Working pressure		MPa	1.6									
Condensation water pipe		mm	Φ 26	Φ 26	Φ 26	Φ 26	Φ 26	Φ 26	Φ 26	Φ 26	Φ 26	
Dimension	Natural Drainage	LxWxH mm	593*593*420			752*752*443		822*822*405		822*822*443		
	Forced Drainage		593*593*270			752*752*293		822*822*260		822*822*293		
	Panel		650*650*45			850*850*45		950*950*45				
N.W.	Natural Drainage	kg	19	19	20	23	23	25	28	28	29	
	Forced Drainage		19	19	20	26	26	28	31	31	32	
	Panel		2.2			4.5		6				

Remarks:

1. Cooling: Inlet air temperature DB 27°C, WB 19.5°C; Chilled water inlet/outlet temp. 7°C/12°C.
2. Heating: Inlet air temperature DB 21°C, heating water inlet temperature 60°C.
(tested by the same water flow with cooling condition).
3. The noise level is measured in: background noise 11.5Db(A) semi-anechoic room as per GB/T19232-2003.
4. Rated air flow is tested in standard air condition with DB 20°C.
5. H,M,L refer to high, medium and low fan speed respectively.
6. Static pressure refers to outlet static pressure.
7. All parameters are tested based on power supply 220V-/50HZ.
8. Specifications are subject to product improvement and change without notice.

Cassette Fan Coil Unit(4-way 4 pipe system)

Model EST~			200C4	300C4	400C4	500C4	600C4	800C4	1000C4	1200C4	1400C4	
Power supply			220V/1PH/50HZ									
Air flow (m3/h)	H		340	510	680	850	1020	1360	1700	2040	2380	
	M		280	380	515	660	765	1040	1280	1550	1800	
	L		180	260	340	430	530	710	860	1050	1280	
Static pressure			Pa	0	0	0	0	0	0	0	0	
Cooling capacity	TH	H	W	1350	2030	2700	3380	4050	5400	6750	8100	9450
			BTU/h	4606	6926	9212	11533	13819	18425	23031	27637	32243
	SH	H	W	1010	1520	2080	2450	3230	4130	5160	6220	6989
			BTU/h	3446	5186	7097	8359	11021	14092	17606	21223	23846
	TH	M	W	1130	1850	2250	2790	3320	4830	5890	6970	7873
			BTU/h	3856	6312	7677	9519	11328	16480	20097	23782	26863
	SH	M	W	770	1200	1540	1870	2340	3260	4150	5080	5532
			BTU/h	2627	4094	5254	6380	7984	11123	14160	17333	18875
	TH	L	W	1040	1540	1860	2190	2840	4200	5420	6400	6674
			BTU/h	3548	5254	6346	7472	9690	14330	18493	21837	22772
	SH	L	W	630	920	1180	1410	1830	2530	3400	4040	4234
			BTU/h	2150	3139	4026	4811	6244	8632	11601	13784	14446
Heating capacity	H	W	1080	1620	2160	2700	3240	4320	5400	6480	7560	
		BTU/h	3686	5529	7372	9215	11058	14744	18430	22116	25802	
	M	W	780	1108	1575	1961	2278	3170	4189	5199	5560	
		BTU/h	2662	3782	5375	6693	7775	10819	14297	17744	18976	
	L	W	519	710	1112	1402	1550	2168	2797	3458	3880	
		BTU/h	1771	2423	3795	4785	5290	7399	9546	11802	13242	
Noise	H	dB(A)	37	39	41	43	45	46	48	50	51	
Power input	H	W	37	52	62	76	96	134	152	189	228	
Water flow volume	Cooling Tube	H	m ³ /h	0.23	0.35	0.46	0.58	0.69	0.93	1.16	1.39	1.60
	Heating Tube			0.09	0.14	0.19	0.23	0.28	0.37	0.46	0.56	0.70
Water resistance	Cooling	H	kPa	8.26	8.26	15.68	18.9	20.72	20.72	24.78	24.78	40
	Heating			3.54	3.54	6.72	8.1	8.88	8.88	10.62	10.62	16
Inlet water pipe		Cooling tube/ Heating tube	ZG3/4"	ZG3/4"	ZG3/4"	ZG3/4"	ZG3/4"	ZG3/4"	ZG3/4"	ZG3/4"	ZG3/4"	
Outlet water pipe			ZG3/4"	ZG3/4"	ZG3/4"	ZG3/4"	ZG3/4"	ZG3/4"	ZG3/4"	ZG3/4"	ZG3/4"	
Coil		type	Hydrophilic aluminum fin arounds high efficient copper pipe									
Working pressure		MPa	1.6									
Condensation water pipe			mm	∅ 26	∅ 26	∅ 26	∅ 26	∅ 26	∅ 26	∅ 26	∅ 26	∅ 26
Dimension	Natural Drainage unit		LxWxH mm	593*593*420			752*752*443		822*822*405		822*822*443	
	Forced Drainage unit			593*593*270			752*752*293		822*822*260		822*822*293	
	Panel			650*650*45			850*850*45		950*950*45			
N.W.	Natural Drainage unit		kg	19	19	20	23	23	25	28	28	29
	Forced Drainage unit			19	19	20	26	26	28	31	31	32
	Panel			2.2			4.5		6			

Remarks:

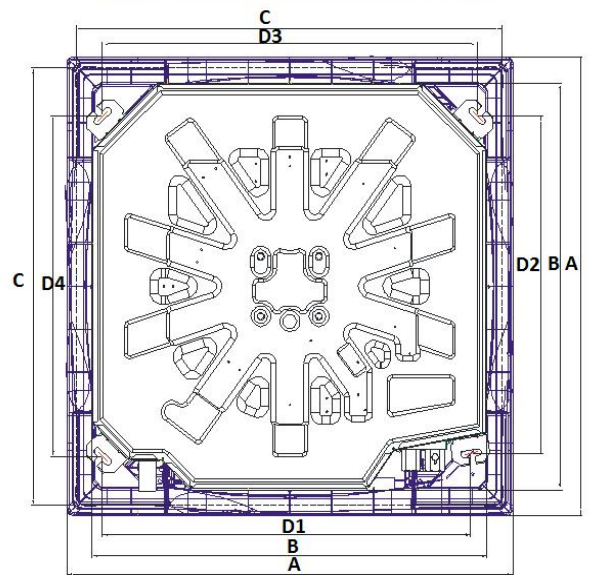
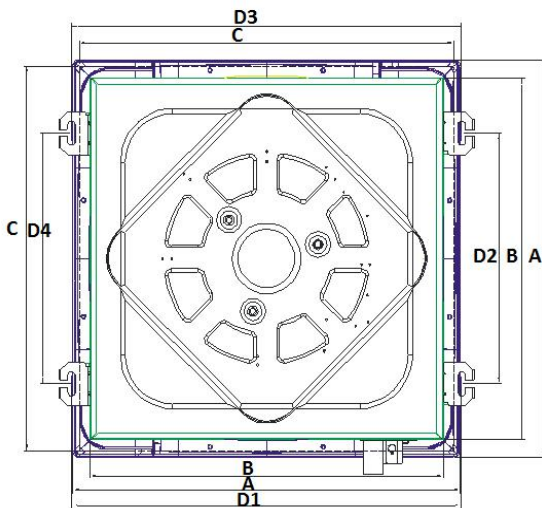
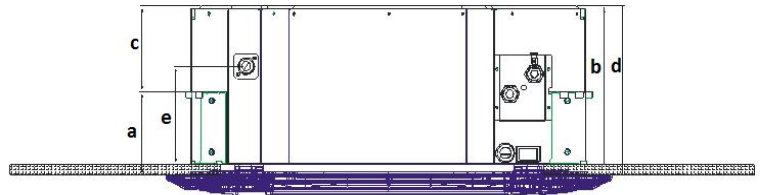
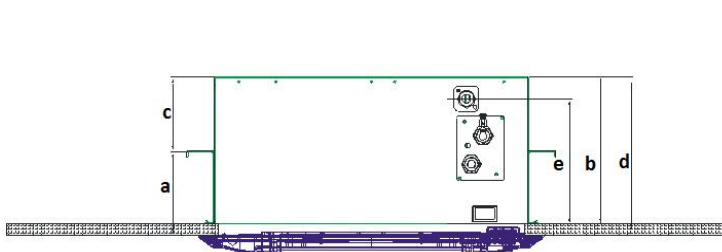
1. Cooling: Inlet air temperature DB 27℃, WB 19.5℃; Chilled water inlet/outlet temp. 7℃/12℃.
2. Heating capacity 1 (hot water coil): Inlet air temperature DB 21℃, heating water inlet/outlet temp. 60℃/50℃.
3. The noise level is measured in: background noise 11.5Db(A) semi-anechoic room as per GB/T19232-2003.
4. Rated air flow is tested in standard air condition with DB 20℃.
5. H,M,L refer to high, medium and low fan speed respectively.
6. Static pressure refers to outlet static pressure.
7. All parameters are tested based on power supply 220V-/50HZ.
- 8.Specifications are subject to product improvement and change without notice.

Cassette Fan Coil Unit(4-way)

Installation Dimension

Model	Annotation	EST200C	EST500C	EST800C	EST1000C
		EST300C	EST600C		EST1200C
		EST400C			EST1400C
Distance between hook and ceiling	a	154~159	154~159	154~159	154~159
Unit body thickness	b	270	293	260	293
Distance between hooks and unit topside	c	134	157	122	157
Min ceiling space for installation	d	290-295	313-318	263-293	313-318
Distance between drain pipe and ceiling	e	230	182	212	182
Panel width	A	650	850	950	950
Unit body width	B	593	752	822	822
Ceiling openings dimension	C	610-630	780-810	875-910	875-910
Distance between hooks 1	D1	656	702	766	766
Distance between hooks 2	D2	410	625	675	675
Distance between hooks 3	D3	656	713	781	781
Distance between hooks 4	D4	410	631	663	663

Unit:mm



EST-200,300,400C2

EST-500,600,800,1000,1200,1400C2

Cassette Fan Coil Unit(4-way)

Installation Dimension Illustration

